

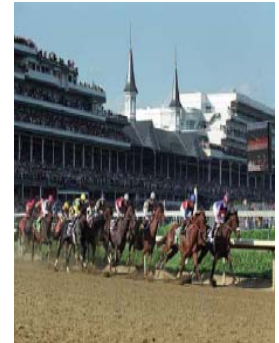


## The Convention City...Louisville, KY

For many of us, our only association with Louisville has been the “*Wide World of Sports*” telecast of the Kentucky Derby. While this event draws worldwide attention to the city the first Saturday in May, there is a lot more to Louisville. Founded in 1778, the city is named for King Louis XVI in recognition of France’s aid during the Revolutionary War. Louisville’s location, at the Falls of the Ohio River, made it a prime location for industrial development. The introduction of the Steamboat in the early 1800’s followed by the



construction of the Louisville and Nashville Railroad secured the city’s position as a major commercial center. The city went from being a Union base of operations and military supply center during the Civil War to the home of the world’s largest distillery following the repeal of prohibition. During World War II, companies such as DuPont helped Louisville become one of the largest producers of synthetic rubber. Today, Louisville remains a center of commerce and is home to 120 unique attractions. The **Louisville Science Center** offers 150 interactive exhibits and activity stations for all ages as well as an IMAX® Theater. The **Speed Museum** is Kentucky’s oldest and largest art museum. The museum houses over 12,000 pieces in their permanent collection; ranging from ancient Egyptian to contemporary art. Currently, there are 1,300 animals exhibited in naturalistic and mixed animal settings at the 134 acre **Louisville Zoo**. Other attractions available to visitors include the **Kentucky Derby**



**Museum, the Muhammad Ali Center, the Louisville Slugger Museum, and Six Flags Kentucky Kingdom.**

## The Convention Site... The Galt House



The **Galt House Hotel and Suites** on the banks of the Ohio River is one of the largest hotels in the Southeast and Louisville’s only downtown waterfront hotel. The Galt House recently underwent a \$60 million dollar renovation resulting in the addition of a Conservatory linking the hotel’s two 25-story towers. The Galt House is located just seven miles from the airport and has all the amenities to make for a memorable stay. There are six full service restaurants and lounges and all 1,296 rooms have complimentary WiFi. All of the convention functions, with the exception of the outing to Churchill Downs, are in the Hotel.

The Day at the Races outing at Churchill Downs is an event you will not want to miss. The hotel is within walking distance of 4th Street Live! the city’s dining & entertainment district, the Muhammad Ali Center, Louisville Slugger Plant and Museum, Louisville Science Center and more. For additional information on The Galt House Hotel and Suites go to [www.galthouse.com](http://www.galthouse.com).

